



What Enterprises Are Actually Achieving With SAP Cloud ERP

There is no shortage of questions about enterprise resource planning. Can a platform built for global giants truly serve a mid-market company with 50 employees? Does going live really require a year of disruption and a team of consultants? Is the return on investment proven, or is it still a promise made in pitch decks?

Accel4 answers those questions every day with implementation. We partner with growing organizations to deploy SAP Cloud ERP in a practical, fast way, built around what actually matters: running a smarter business.

Let's walk through the areas where we see the most uncertainty in the market and show, through the lens of what we do for our clients, how SAP Cloud ERP delivers in each one. The evidence is not theoretical. It is drawn from real deployments, real timelines, and real business outcomes achieved by organizations that look exactly like yours.





Achieving Enterprise Performance on a Growth-Minded Budget

Cost is the first objection we hear, and it is almost always rooted in the wrong comparison. Organizations looking at SAP Cloud ERP often benchmark it against legacy on-premise deployments, projects defined by massive upfront licensing fees, hardware infrastructure, and multi-year implementation timelines that balloon beyond their original scope.

SAP Cloud ERP operates on an entirely different economic model. Preconfigured best practices reduce the costly customization that historically made ERP implementations unpredictable. And because the platform is cloud-delivered, the ongoing cost of maintenance, security, and system updates is absorbed by SAP.

Let's walk through the areas where we see the most uncertainty in the market and show, through the lens of what we do for our clients, how SAP Cloud ERP delivers in each one. The evidence is not theoretical. It is drawn from real deployments, real timelines, and real business outcomes achieved by organizations that look exactly like yours.



The Accel4 Approach

We design engagements around business outcomes, not feature lists. Every line item in a project scope must connect to a measurable operational benefit. This discipline keeps costs predictable and ROI visible from day one.

Why 80% of SAP Customers are Midsize Leaders



The most persistent misconception about SAP is that it is built for the Fortune 500. The data tells a different story: approximately 80% of SAP's 460,000+ customers worldwide are small and midsize businesses. They can start with the modules most relevant to their current stage: finance, procurement, supply chain, or people management, and expand as the business evolves. Scalable architecture and flexible pricing mean the system grows with you, rather than forcing you to grow into it.

Our methodology is calibrated for businesses that need enterprise-grade capabilities without enterprise-grade complexity.

Subscription-based pricing means organizations pay for what they use and scale as they grow, avoiding the capital expenditure that made traditional ERP a board-level risk conversation. What Accel4 brings to this equation is precision: we help clients define scope tightly, align deployment to actual business priorities, and avoid the feature sprawl that drives costs up without delivering proportional value.

of SAP's 460,000+ global customers are small and midsize businesses.



Accelerating ERP Deployment in as Little as 8 Weeks

SAP Cloud ERP implementations are accelerated by preconfigured industry best practices that eliminate the need to build processes from scratch. Guided setup tools, automation for configuration and testing, and SAP's Activate methodology create a structured path from kickoff to go-live. With the SAP Cloud ALM tool and SAP Build solutions, the technical lift is significantly reduced.

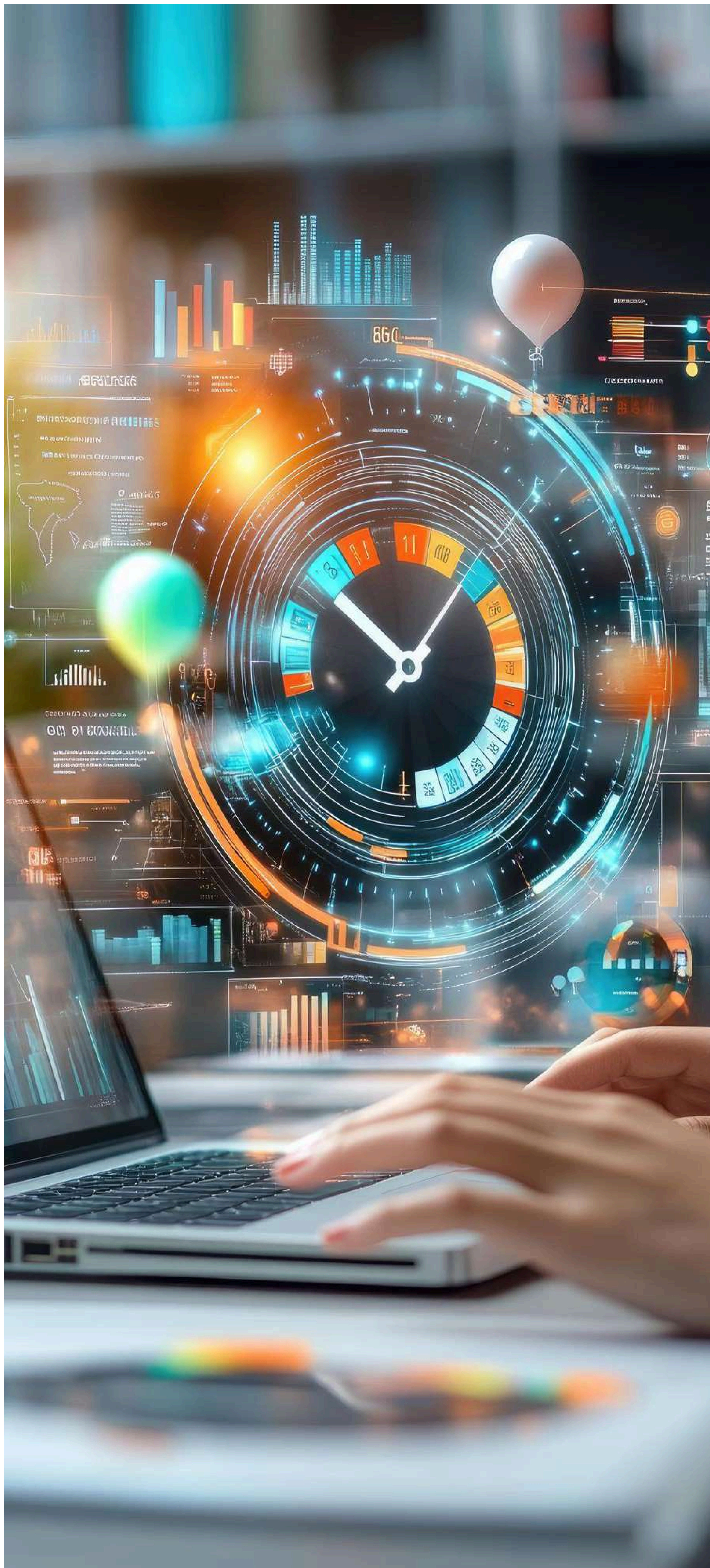
Accel4 uses a digital discovery assessment to define scope, timelines, and key processes before a single configuration is made. This upfront clarity is what makes rapid deployment possible and sustainable. Ambiguity at the start of a project is the primary driver of timeline overruns. We remove it before the project begins. The SAP partner ecosystem provides an additional layer of confidence: when clients work with Accel4, they are not navigating implementation alone. Our certified consultants keep projects on schedule and within budget, a level of predictability that self-directed implementations rarely achieve.



Accel4 Deployment Track Record

Using SAP Activate methodology and our proven implementation framework, Accel4 regularly achieves go-live timelines of 8 to 16 weeks for mid-market clients, with no internal IT team required on the client side.

Reaching 100% Productivity from Day One

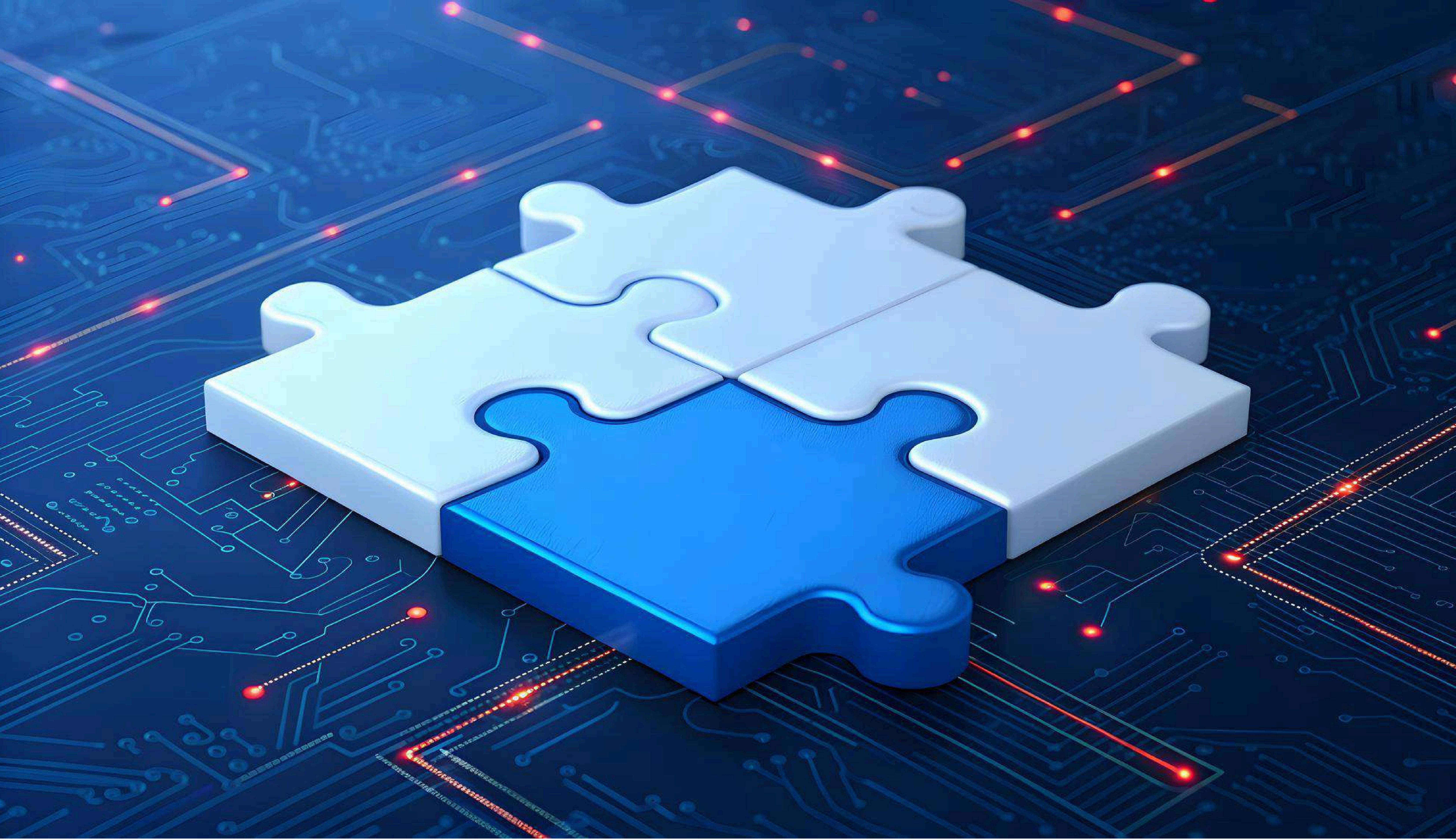


SAP Cloud ERP's modular design is built for clarity and control. Ready-to-use dashboards, guided workflows, and embedded AI make the system intuitive from the start. The SAP Fiori interface is designed around how people actually work, not around how a database is organized. This distinction matters enormously when it comes to adoption speed.

Built-in best practices for finance, supply chain, and people processes so that teams are not starting from a blank slate. Routine updates are delivered automatically through cloud delivery, so the system stays current without requiring IT intervention.

Accel4 builds adoption planning into every engagement. Training, change management, and role-based onboarding are not afterthoughts. They are designed in parallel with the technical configuration.

When clients go live with Accel4, they go live ready. That is not a claim — it is an outcome we design for from the first week of every engagement. The distinction between a system that gets adopted and one that gets abandoned almost always comes down to whether the people using it were prepared before go-live, not trained after the fact.



The Accel4 Clean-Core Philosophy

We advocate for a fit-to-standard, clean-core implementation approach. This means working with SAP's built-in best practices wherever possible, and extending thoughtfully only where genuine business differentiation demands it. The payoff is a system that is easier to integrate, simpler to maintain, and future-ready from the start.

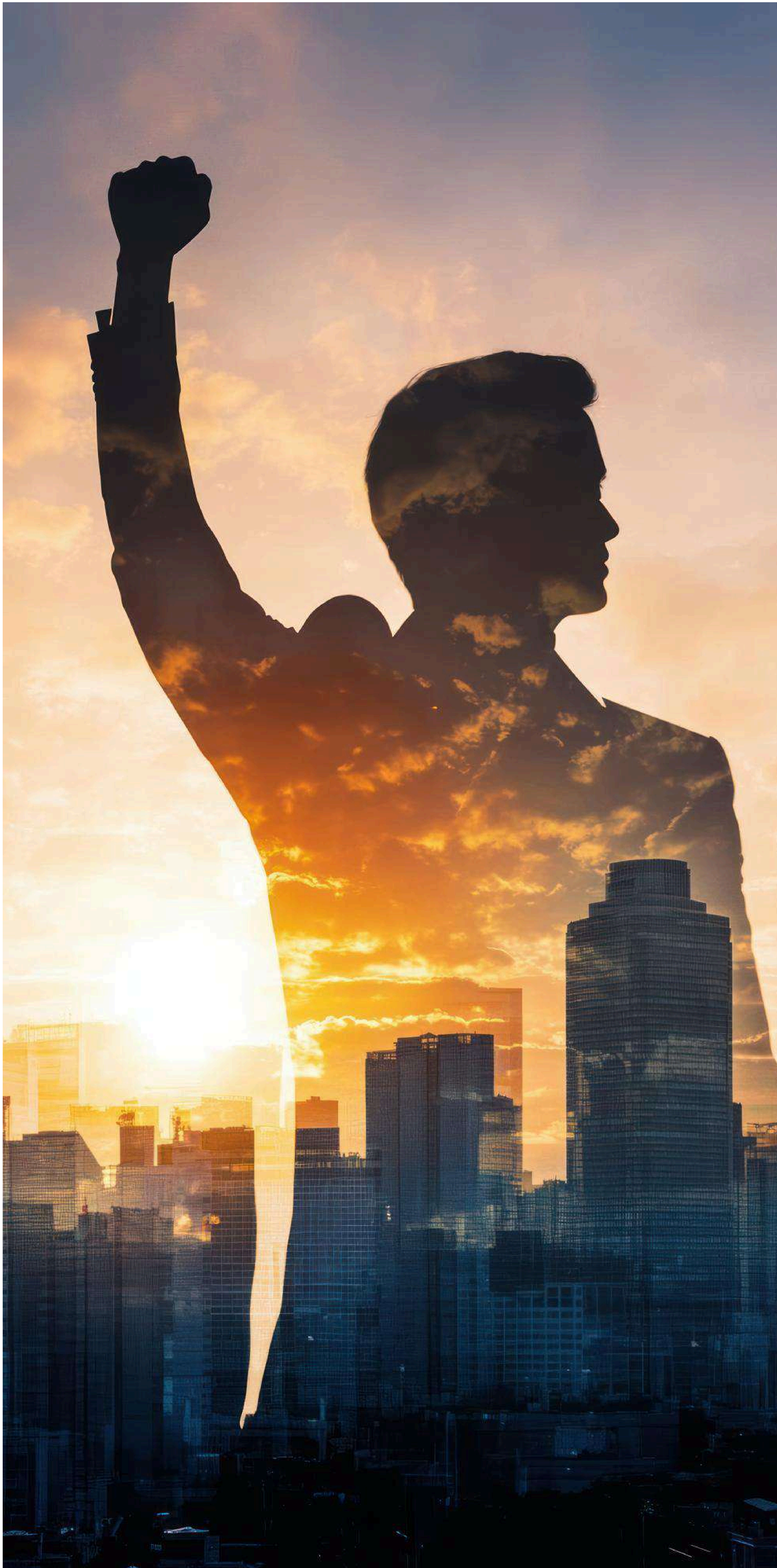
Clean Approach to Simple Integration

One of the most common concerns we encounter is the assumption that connecting SAP Cloud ERP to existing tools, such as CRM systems, e-commerce platforms, industry-specific applications, and reporting tools, will require an army of developers and months of custom code.

SAP Cloud ERP is built with integration in mind. Standard APIs and extensions on SAP BTP make it straightforward to connect the ERP to the applications, tools, and systems an organization already uses. The platform is designed for scalability, extensibility, and openness, which means integration is a configuration task.

Preconfigured industry best practices further reduce the need for customization. When you start with a clean core and a fit-to-standard approach, the system reflects how your business should run, and the integrations you need become much simpler to build and maintain. The result is a future-ready architecture that adapts to your business. As your technology ecosystem evolves, your SAP core remains stable, extensible, and free of the technical debt that accumulates when every connection is a custom build.

Scalable Foundation that Evolves with Your Success



SAP Cloud ERP's modular design is built for clarity and control. Ready-to-use dashboards, guided workflows, and embedded AI make the system intuitive from the start. The SAP Fiori interface is designed around how people actually work, not around how a database is organized. This distinction matters enormously when it comes to adoption speed.

Built-in best practices for finance, supply chain, and people processes so that teams are not starting from a blank slate. Routine updates are delivered automatically through cloud delivery, so the system stays current without requiring IT intervention.

Accel4 builds adoption planning into every engagement. Training, change management, and role-based onboarding are not afterthoughts. They are designed in parallel with the technical configuration.

The organizations that struggle with ERP scale are almost always the ones that built on an unstable foundation, too much customization, too little standardization, processes mapped to how the business worked three years ago rather than how it needs to work tomorrow. Accel4's deployment methodology is built specifically to prevent that outcome. We construct foundations that are designed to be extended, not replaced.



Preconfigured Best Practices for Your Unique Workflows

A generic ERP system forces organizations to build industry logic on top of a neutral foundation. SAP Cloud ERP takes a different approach: industry relevance is built in.

With more than 25 industry-specific templates and embedded analytics, SAP Cloud ERP is designed for real sectors. Each template includes preconfigured best practices and data models tailored to the workflows of that sector.

Accel4's consulting team brings deep industry experience to every engagement. We do not apply a generic methodology and then layer industry knowledge on top. Our consultants understand the operational realities of the sectors we serve, the regulatory requirements, the customer expectations, and the supply chain dynamics, and we bring that context to every configuration decision.

The result is a system your teams recognize immediately. When the processes in the ERP reflect the actual workflows of your industry, adoption accelerates and value appears faster, not weeks after go-live, but from the first day of operation. That is the difference between a system that was configured for your sector and one that was simply sold to it.

Industry-Ready from Day One

SAP Cloud ERP includes preconfigured workflows for sectors spanning manufacturing, retail, professional services, wholesale distribution, and more. Accel4 aligns these templates precisely to each client's workflows, reducing go-live timelines and ensuring the system reflects how your business actually operates, not how a generic ERP assumes it does.



How Enterprises Are Actually Achieving Value with SAP Cloud ERP

SAP Cloud ERP delivers ROI through connected, data-driven processes that eliminate duplication, reduce manual work, and accelerate close cycles. Real-time analytics make results transparent and trackable. Automation and embedded best practices drive continuous efficiency gains.

The metrics our clients cite are consistent: faster financial close, reduced inventory carrying costs, lower procurement cycle times, improved cash flow visibility, and significant reductions in manual effort.

What Measurable ROI Looks Like

- Procurement cycle time reductions of 40% through automated purchasing workflows
- Inventory carrying cost reductions of 20% through real-time inventory visibility
- Month-end close compressed from four days to two through connected finance processes
- Manual effort reductions of 30% or more through embedded process automation
- Infrastructure cost reductions of 10% through cloud-delivered architecture

Accel4 measures success in business outcomes, not implementation milestones. Our engagements are structured around a clear value realization framework. We identify the KPIs that matter before the project starts, instrument the system to track them, and hold ourselves accountable for delivering movement on those numbers.



How Growing Enterprises Are Actually Scaling with SAP Cloud ERP

Sophistication without value is expensive complexity. The organizations that get the most from SAP Cloud ERP are those that understand where the value is embedded — and have a partner who knows how to unlock it.

The value of SAP Cloud ERP lies in the depth of what connected processes enable. When finance, procurement, supply chain, and operations share a single data model, decisions improve. When real-time analytics replace end-of-month reporting, the business responds faster. When automation handles routine tasks, people focus on higher-value work.

This is where Accel4's role is most critical. The platform's value is not automatic; it is realized through how the system is configured, how processes are designed, and how teams are enabled to use the capabilities available to them. Our engagement model extends beyond go-live: post-implementation optimization reviews, expansion planning, and ongoing enablement support ensure that clients continuously extract value from their investment as the business scales. Our clients do not just go live — they grow forward.



Beyond Go-Live

Accel4's engagement model includes post-implementation optimization reviews, expansion planning, and ongoing enablement support. Our clients do not just go live, they grow forward, continuously identifying new ways to leverage the platform as their business scales.

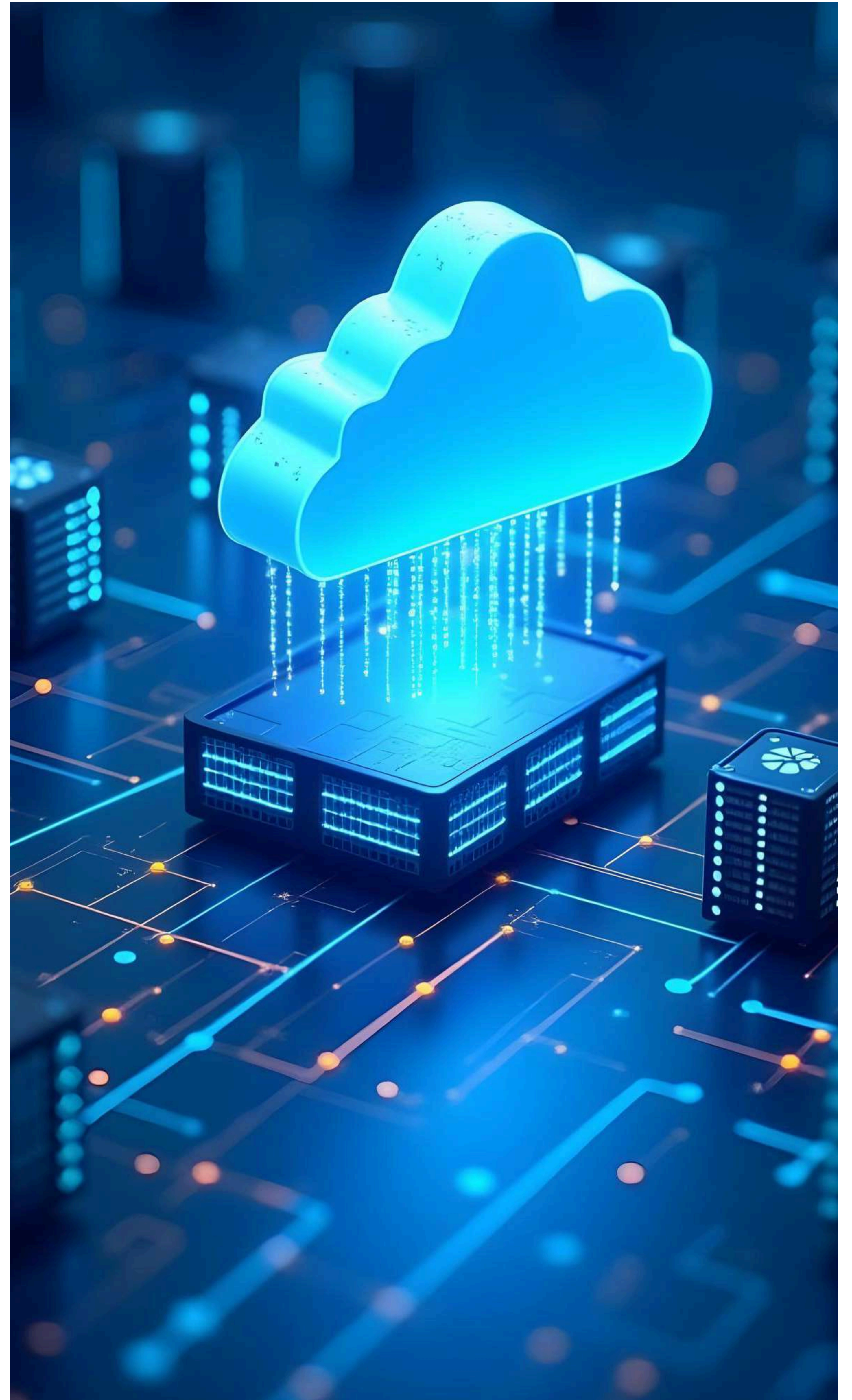
Building What's Next, Together

What Accel4 offers is not reassurance; it is evidence. We have deployed SAP Cloud ERP across industries, company sizes, and operational contexts. We have seen firsthand how a well-executed implementation transforms the speed at which a business can move, the clarity with which leaders can make decisions, and the confidence with which teams can operate.

The companies that are winning right now are the ones that got their operational foundation right. They are not stitching together disconnected tools or managing the drag of legacy systems. They have a single, intelligent platform that gives them real-time insight and the agility to act on it.

Accel4 exists to make that outcome accessible to every growing enterprise. We bring the expertise, the methodology, and the commitment to outcomes that transform an ERP investment into a genuine competitive advantage.

The platform does not stand still, and neither do we. Continuous innovation across cloud, data, and AI means the capabilities available to our clients expand over time, without requiring new implementations or additional complexity. The businesses that move now are the ones that will have the operational advantage that compounds. Every quarter spent on a fragmented, legacy infrastructure is a quarter spent falling behind organizations that made the decision to build on a foundation that scales.



What could your business achieve with the right ERP foundation if you start now?

[Let's Talk](#)

